

WTOC 2025 BULLETIN 4



Contents

WELCOME BY THE EVENT DIRECTORS	4
VENUE	5
ORGANISING TEAM	7
COMPETITION RULES	8
CLASSES	8
PARTICIPATION	8
EVENT PROGRAMME	10
LOCATION OF VENUES AND EMBARGOED AREAS	11
COMPETITION OFFICES	12
FOOD AND REFRESHMENT	12
CLIMATE	13
EVENT CENTRES	14
BANQUET	15
MAPS	15
HAZARDS	15
ESCORT, ACCESSIBILITY FOR MOBILITY IMPAIRED COMPETITORS	15
Model Event – Sáska	16
PreO Day 1 – Zalahaláp	19
PreO Day 2 – Sümeg	21
Model – Častá	25
Relay – Dolný Lopašov	27
TempO – Častá - Červený Kameň	29
MAPPING	32
ZERO TOLERANCE	37

ACCREDITATION, NUMBER BIBS	38
PUNCHING, TIME KEEPING AND RESULT SYSTEM	38
ANTI-DOPING	38
COMPLAINTS, PROTESTS, JURY	39
SUMMARY OF RECEIVED ENTRIES	40
PARTNERS AND ORGANISERS	41
SPONSORS	42
NOTES	43

CONTACT INFORMATION

-  info@wtoc2025.org
-  www.wtoc2025.org
-  [Facebook](#)
-  HU +36 302 510724 Zoltán Mihácz
-  SK +421 908 226 250 Dušan Furucz

Welcome by the Hungarian event director



Dear orienteering friends,

In the name of the organizers of the World Trail Orienteering Championship 2025, I would like to invite all the competitors, collaterals, viewers, and anyone who is interested to Hungary, Sümeg city.

The WTOC will be organized in an area, which already housed a lot of international orienteering competitions.

Many can know the traditional Hungarian race: Hungária Cup, which also was in this area a couple of years ago.

We hope that the terrain and the courses will give everyone a memorable experience.

In these years Hungary hosted a lot of events in every orienteering discipline, but this will be its first joint WTOC.

We believe that with our Slovak sport mates together, we will organize a World Trail Orienteering Championship with the one of highest standards.

Paskuj Mátyás

Hungarian Event Director

Welcome by the Slovak event director



Dear orienteering friends,

I would like to invite all competitors, officials, and guests on behalf of the organizing committee, Slovak orienteering association and orienteering club Farmaceut Bratislava to the World Trail Orienteering Championships 2025 in Slovakia and Hungary.

The Slovak orienteering association has great experiences with organizing important events in various orienteering disciplines and we are believing that together with our Hungarian friends we will organize fair and nice competition with the possibility to explore beauty and interesting places in Slovakia.

I would like to apologize that you may face a little bit higher requirements for traveling, but each competition will be held in different type of terrain with great demands on TrailO skills. You will meet flat, hilly, and steep slopes, different vegetation mostly in non-urban areas.

Hana Šmelíková

Slovak Event Director

Venue

The World Trail Orienteering Championships will take place in two countries for first time in IOF history.

The first part of World Trail Orienteering Championships 2025 will be held around Sümeg, north from Balaton, in Balaton highlands in Hungary.



The Balaton highlands are an uneven plateau rising 150–200 meters above the lake. The Tapolcai basin is made up of a Miocene limestone plateau extending like a bay into the dolomite scene, where basalt was poured, or basalt tuff fell. As a result of the erosion, peculiarly shaped witness mountains were formed.

The area around Sümeg has been inhabited since the Bronze Age. In the 13th century, the castle, which is the symbol of Sümeg, was built on top of the 270 m high limestone hill towering over the town. The castle was primarily of military importance during the Turkish wars. After the decline of its strategic importance and thanks to the destruction of the Habsburg fortress, the castle fell into ruins. In the 19th century, Sümeg gained a reputation as an important place for the wine trade beyond Hungary. It acquired its city status in 1984.



Balaton is the largest lake in Central Europe and a defining element of Hungary's hydrography. Its shallow water, which warms up easily, makes it excellent for swimming and sports, its wildlife is extremely rich, and the landscape is unique in

many ways with its varied volcanic cones.

<https://sumegvar.hu/en>

<https://visithungary.com/>

The second part will be held in Bratislava, the capital of Slovakia, and its neighbouring areas.



The Little Carpathians are a relatively low and narrow mountain range, about 100 km long with very diverse relief. Geomorphologically, the Little Carpathians belong to the Alps-Himalaya System, the Carpathian Mountains sub-system. The mountains begin in Bratislava and continue about 100 km to the northeast. This territory is largely covered by deciduous forests with beech, common ash, sycamore maple and linden. There are a total of eight karst areas in the Little

Carpathians with great possibilities for orienteering. Since the Middle Ages, the area has been known for its wines and wine-making traditions.



Bratislava is the political, cultural, and economic centre of Slovakia with a population of about 500,000 inhabitants and located in the southwestern Slovakia, at the junction of rivers Danube and Morava. Bratislava is very close to two other countries Austria and Hungary. Bratislava is historically tied with these countries and during long history it was a significant economic, cultural, and political centre of Central Europe. You can find a lot of unique architecture, culture, history tradition, art, drinks, food, and nightlife in this “small” city.

The individual races will be held in different regions of Trenčín and Trnava especially in municipalities Chtelnica, Dolný Lopašov and Častá. These small villages are very beautiful with diverse nature. You can see the very flat forests change to rugged terrain forms or extremely steep slopes.

<http://www.visitbratislava.com>

<http://www.slovakiatouring.com>

Organising team

The event will be organized by members of the orienteering clubs” Tipó Tájfutó és Környezetvédő Egyesület” for Hungarian part and “TJ Farmaceut Bratislava” for Slovak part of WTOC, with the support of the Slovak Orienteering Association. Main officers are:

	HUNGARY	SLOVAKIA
Event Directors:	Mátyás PASKUJ	Hana ŠMELÍKOVÁ
Mappers:	Gábor FORRAI Miklós FORRAI	Dušan FURUCZ
Course Setter:	Zoltán MIHÁCZI	Dušan FURUCZ Ján FURUCZ
Finances :	Miklós BOGDÁNY	Ján MIŽÚR
HR and volunteers:	Mátyás PASKUJ	Hana ŠMELÍKOVÁ
Arena manager:	Zoltan KULCSÁR	Maroš BUKOVÁC
National Controllers:	Dušan FURUCZ	Zoltán MIHÁCZI
IOF Senior Event Adviser :	Per STÅLNACKE (NOR)	
IOF Assistant Event Adviser:	Petteri HAKALA (FIN)	



Competition rules

The COMPETITION RULES FOR INTERNATIONAL ORIENTEERING FEDERATION (IOF) TRAIL ORIENTEERING EVENTS (Rules for the World Trail Orienteering Championships) valid from **1 January 2025** shall apply to the World Trail Orienteering Championships 2025. Copy of the Rules is available for download from the Rules section in the official IOF website (<https://orienteering.sport/trailo/competition-rules/>).

The following deviation of the Competition Rules applies:

There are not know any deviation according to Competition Rules.

Classes

In the individual PreO competitions and in the TrailO Relay there is one O (Open) class and one P (Physically challenged) class. In the TempO competition there is a single Open class (Competition rule WTOC 5.1).

All competitors, regardless of sex, age or physical ability/disability are eligible to be entered for a World Championship Open class competition (Competition rule WTOC 5.2).

Only competitors who have a permanent disability that significantly reduces their mobility are eligible to be entered for a P class competition. Competitors for the P class eligibility must submit to the IOF Office, at least three months before the competition, an eligibility form (available at www.orienteering.sport) completed by the athlete, a doctor, and their Federation. When approved, a certificate authenticating their P class eligibility will be issued. The eligibility certificate must be sent to the event organiser with the final entry form (Competition rule WTOC 5.3).

Participation

All competitors represent a Federation. Each Federation may enter a team of an unlimited number of competitors (Competition rule WTOC 6.5).

Each Federation may enter up to a maximum of four competitors of any physical ability for the PreO competition in the O class, a maximum of four eligible competitors for the PreO competition in the P class and a maximum of four competitors for the TempO competition.

In addition to the above the following may be entered by their Federations:

- The current Regional Champions (if the Regional Championship was held after the previous WTOC) and the current World Champions in their respective classes
- 2 juniors (aged 20 years or younger at the end of the calendar year) in each class and format
- The top 15 in the World Ranking list (as it stands 3 months prior to the first race of the event) with a maximum of the 2 best ranked from each Federation for the PreO O class and TempO.

- The top 15 in the World Ranking list (as it stands 3 months prior to the first race of the event) with a valid (spanning the WTOC) eligibility certificate with a maximum of the 2 best ranked from each Federation for the PreO P class.

These extra places are personal. Each criterion is evaluated separately with no regard to the outcome of any other criteria (Competition rule WTOC 6.6).

Wild cards for top 15 in the World Ranking list and current Championships for WTOC 2025 have been officially assigned and you can find the list on the IOF page: <https://orienteering.sport/wild-cards-for-wtoc-2025/>.

For the TrailO Relay, a team consists of three competitors. Each Federation may only nominate one team in each class, O and P. Incomplete teams and teams with competitors from more than one Federation are not allowed (Competition rule WTOC 6.8).

Disabled competitors requiring physical assistance from an able-bodied escort must bring their own escort. The organiser is only required to provide extra assistance at difficult section, e.g., steep up- or downhill sections. Escorts must not assist in any way with the map reading, control site identification, analysis, or selection process, nor disturb the concentration of any competitor (Rule WTOC 6.9).

A competitor must have a valid IOF Athlete Licence (Competition rule WTOC 6.11).

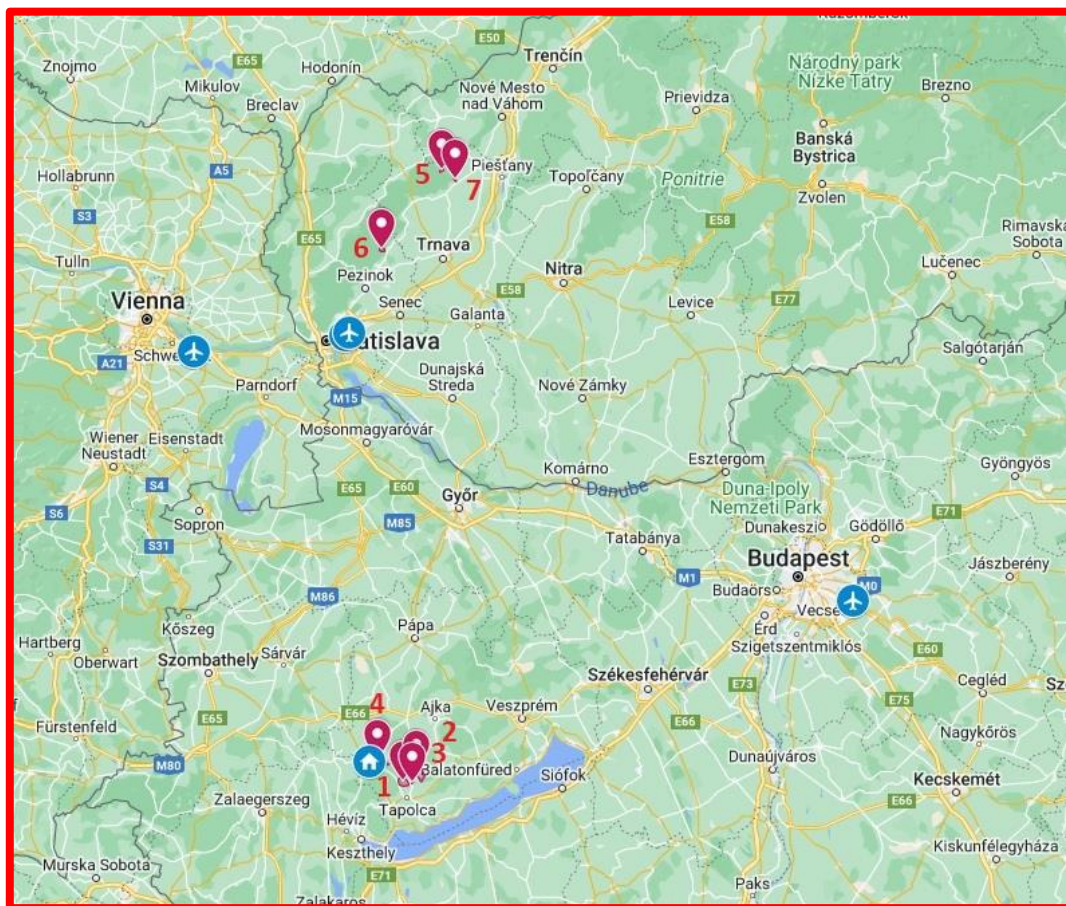


(c) WTOC 2023 – Dan Dvořáček

Event programme

Date	Time	Event	Location
Monday, August 25	18:00	Event Office opens, Arrivals	Sümeğ (HUN)
Tuesday, August 26	9:00	TOC Classification for P category	Sáska (HUN)
	10:00	Model for PreO and Relay (PreO part)	Sáska (HUN)
	12:00	PreO competition entry deadline	IOF Eventor
	18:30	Opening Ceremony	Sümeğ (HUN)
	19:00	Team official's meeting	Sümeğ (HUN)
Wednesday, August 27	10:00	PreO - Day 1	Zalahaláp (HUN)
	12:00	PreO quarantine closing	Zalahaláp (HUN)
	15:00	PreO - Public competition	Zalahaláp (HUN)
Thursday, August 28	9:00	PreO quarantine closing	Sümeğ (HUN)
	10:00	PreO - Day 2	Sümeğ (HUN)
	15:00	PreO - Public competition	Sümeğ (HUN)
	18:30	PreO - Prize giving ceremony	Sümeğ (HUN)
	20:00	Banquet	Sümeğ (HUN)
Friday, August 29 (National Holiday in Slovakia)	9:00	TOC Classification for P category	Častá (SVK)
	10:00	Model for TempO and Relay (TempO part)	Častá (SVK)
	18:00	Relay competition entry deadline	IOF Eventor
	18:30	Event Office opens	Bratislava (SVK)
	19:00	Team official's meeting	Bratislava (SVK)
Saturday, August 30	9:00	Relay quarantine closing	Dolný Lopašov (SVK)
	(8:30)	(recommended time on Parking)	
	10:00	Relay	Dolný Lopašov (SVK)
	12:00	TempO competition entry deadline	IOF Eventor
	14:00	Relay course open for public	Dolný Lopašov (SVK)
	15:00	Relay - Prize giving ceremony	Dolný Lopašov (SVK)
Sunday, August 31	19:00	Team official's meeting	Bratislava (SVK)
	9:15	TempO quarantine closing	Častá (SVK)
	9:30	TempO - Qualification	Častá (SVK)
	13:00	TempO - Public competition	Častá (SVK)
	15:15	TempO Final quarantine closing	Častá (SVK)
	15:30	TempO - Final	Častá (SVK)
	18:00	TempO - Prize giving ceremony Closing Ceremony	Častá (SVK)
Monday, September 1		Departures	Bratislava (SVK)

Location of venues and Embargoed areas



1. Ódörög - released.
2. Sáska - PreO model
3. Zalahaláp – PreO Day 1
4. Sümeg - PreO Day 2
5. Vítek - released.
6. Červený Kameň – TempO
7. Dolný Lopašov – Relay

All embargoed areas are out of bounds for all potential WTOC 2025 team members (competitors, officials, escorts, etc.) and any other person who may influence the results of the competitions by any knowledge of the terrain (Competition rule 17.2).

You can find more information about [embargoed areas](#) on the official website.

The embargoed areas will be released by organizers after announcing official result (and after the final decision of complaints and protests). The competing participants cannot attend public competition on day of event.

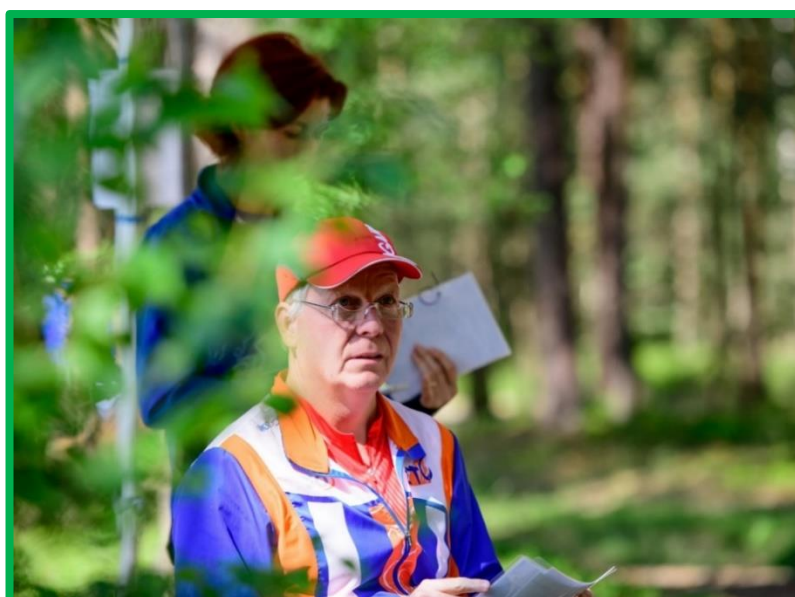
Competition offices

Date	Time	Location
Monday, August 25	18:00 – 20:00	Sümeğ (HUN) - Hotel Kapitany Wellness
Tuesday, August 26	9:30 – 15:00 18:30 – 20:30	Sáska (HUN) – Model event centre Sümeğ (HUN) - Hotel Kapitany Wellness
Wednesday, August 27	9:00 – 16:00	Zalahaláp (HUN) - PreO 1 event centre
Thursday, August 28	9:00 – 16:00	Sümeğ (HUN) - PreO 2 event centre
Friday, August 29 (National Holiday)	10:00 – 15:00 18:30 – 20:30	Častá (SVK) – Model event centre Bratislava (SVK) - Vienna House Easy by Wyndham
Saturday, August 30	10:00 – 15:00 18:30 – 20:30	Dolný Lopašov (SVK) – Relay event centre Bratislava (SVK) - Vienna House Easy by Wyndham
Sunday, August 31	10:00 – 15:00	Častá (SVK) – TempO event centre

Food and refreshment

The organizers will not provide any official catering for competitors and visitors, but during competition days it will be possible to buy some local food, snacks, drinks from third parties in event centres. The self-checkout coffee machine will be available during competition days.

Water will be available in all quarantines, and some number of refreshment stations on the courses depending on weather and type of competition. You can find more information in competition details.



Climate

Balaton highlands:

The average maximum daytime temperature in Tapolca in August lies at 26.0°C. The average minimum temperature goes down to around 15.0°C.

The average monthly rainfall during August is around 54 millimetres, and rarely exceeding 109 millimetres or falling below 16 millimetres.

For precise weather forecast during WTOC check out the [Hungarian Meteorological Service](#).

Bratislava surroundings:

August weather in Bratislava is known as a warm month. The average maximum daytime temperature in Bratislava in August lies at 27.5°C. The average minimum temperature goes down to around 15.3°C.

Rainfall during August is moderate with an average of 64mm (2.5 inches). There are generally around 10 rainy days.

For precise weather forecast during WTOC check out the [Slovak Hydrometeorology Institute](#).



(c) WTOC 2023 – Dan Dvořáček

Event Centres

Hotel Kapitány Wellness, Tóth Tivadar u. 19, 8330 Sümeg, Hungary

Website: <https://hotelkapitany.hu/en>

Locations: GPS: 46.98489, 17.28142

Accessibility of entrance hall, bedrooms, sanitary facilities, and public rooms: All rooms are barrier-free.



Hotel Vienna House Easy by Wyndham Bratislava, Galvaniho ul 28, 821 04 Bratislava, Slovakia

Website: <https://www.wyndhamhotels.com/en-uk/vienna-house/bratislava-slovak-republic/vienna-house-easy-bratislava/overview>

Locations: GPS: 48.16246, 17.18194

Accessibility of Business Centre, Car Self-Park, Public Entrance, Route to Accessible Guestrooms, Route to Accessible Parking, Route to Meeting/Event Space is wheelchair accessible.



Banquet

The banquet will be held in Hotel Kapitany in Sümeg (HUN) on Thursday evening. Please, use the same entry as for PreO 2 quarantine. The arrival is from 19:30, meal will be served from 20:00.

The banquet fee is 57 EUR per person, but for those staying at Hotel Kapitany only 32 EUR. Banquet tickets should be ordered in IOF Eventor by 15.08. 2025. Later orders will only be accepted according to the organizer's possibilities.

Maps

All maps have been made in the period 2023-2025 and revised in 2025. All maps are prepared according to the ISSprOM 2019-2 in scale 1:4 000, and enlarged to 1:3 000. Contour interval is 2m.

The enlargement follows the general IOF map standard meaning when a map is enlarged, all lines, symbols and screens shall be enlarged proportionally. This is a deviation compared to the TECHNICAL GUIDELINES FOR ELITE TRAIL ORIENTEERING (where the symbol size should remain the same if the map is enlarged from 1:4000 to 1:3000).

All maps are printed onto synthetic waterproof paper Pretex. The maps will be collected at finish points and given back to competitors after the race.

Hazards

There is no known occurrence of the life dangerous animals. You can occasionally meet typical fauna for this area (rabbits, roe deer, deer, and wild boar).

Despite the low probability of insect in this area, we are recommending having protection against insects (mosquitoes, ticks).

Escort, Accessibility for mobility impaired competitors

Disabled competitors requiring physical assistance from an able-bodied escort must bring their own escort. The organiser will provide extra assistance at difficult section, e.g., steep up- or downhill sections.

PreO: Both competition courses with gravel road combined with some meadow paths with moderate elevation. However, at PreO 1, there are some significant elevations to start and between the course parts. The organiser will provide extra assistance at those difficult sections.

Relay: Gravel road or meadow with minimal elevation. The organiser will not provide extra assistance.

TempO: Small forest roads or paths. Some significant elevation on some parts of courses. The assistants are recommended for wheelchair competitors. The organiser will provide extra assistance at difficult sections.

Model Event – Sáska - Tuesday, August 26

[Model for PreO and Relay \(PreO part\)](#)

Location: Sáska (HUN) - 46.93849, 17.47869

Distance from EC: 20 km, 21 min

Map: Sáska

Terrain: Open grassland area with low-sloping relief elements.

There are scattered trees and groups of trees in these grazed fields

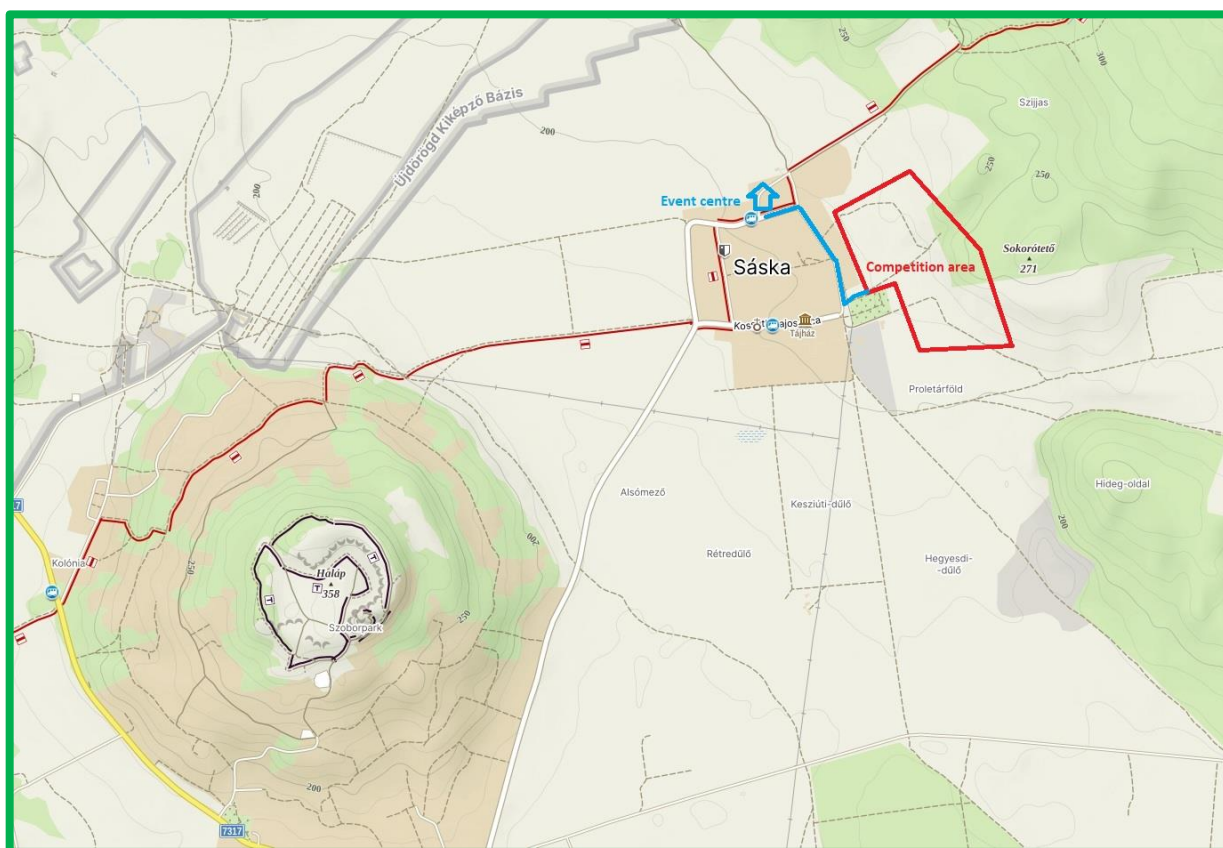
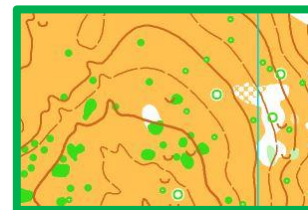
Elevation: 200 - 270m above sea level

Last FootO competition: in year 2020

Last TrailO competition: Never used for TrailO.

Parking: 46.93849, 17.47869 (event centre)

Parking for wheelchairs: 46.93849, 17.47869 (event centre) and there are a few place (only for 2-3 cars) near the start: 46.936367, 17.482010. It is only for wheelchair user!



Time table:

TOC Classification for P category: from 9:00 to 16:00 (event centre)

Start time: first start at 10:00

PreO competition entry deadline: 12:00 (IOF Eventor)

Opening Ceremony: 18:30 (Sümege)

Team official's meeting: 19:00 (Sümege)

Course controls: 19 (one part)

Course length: 560 m (one part)

Climbing: 10 m

Time limit: 74 min (O), 80 min (P)

Timed stations: 1x3 (after the course)

Accessibility: different quality of paths

WC: in the arena, at the start
 Water: in the arena ,at start, at finish.
 Distances:
 Parking – Event Arena 0 – 100m
 Event Arena – Model start 730m
 Model finish - Event Arena 950m.



The model event is open to every accredited athlete, accompanying person and team official. Wearing the number bib is mandatory.

The model event can be considered both as a race and/or a training event. Please, if you consider it to be a training, do not disturb other competitors and behave according to the fair play principles. The solution maps will be given to teams at the event centre, and you can take them to the course. Carrying muted cell phones and taking photos is allowed at the model event.

Start time slots			
10:00	BRA, CRO, CZE, FIN	13:00	LAT, LTU, POL
11:00	HKG, SWE, UKR	14:00	ESP, ISR, KOR, POR, USA
12:00	AUT, GBR, GER, JPN, NED, NOR	15:00	HUN, ITA, SVK



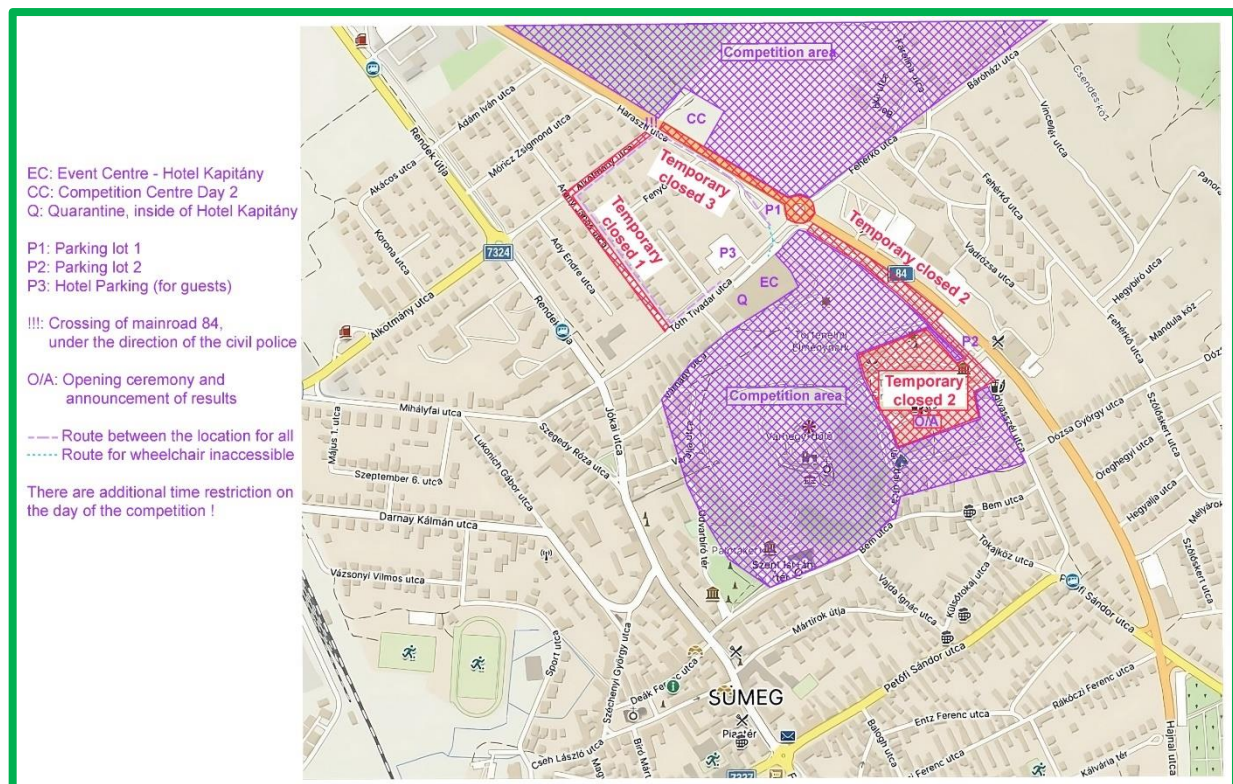
Opening ceremony:

The opening ceremony will take place within the embargoed area in the Historical Memorial Park, next to the outdoor equestrian arena. This inner courtyard and the use of the restaurant in the park are allowed after the opening ceremony. Access is permitted from parking unit P2. Use of main road 84 is permitted for cars. Red line on maps indicate path for pedestrians. Entry to Ceremony arena is permitted only from Parking Lot 2.

The footpath between Parking lot 2 and Hotel Kapitány runs through an embargoed area. It is prohibited to use to end of Day 2. Except use is only permitted 20 minutes before (18:40) and 20 minutes after (about 19:00) the opening ceremony, and between 06:00 and 09:00 on the Day 2!



Overall scheme of PreO 2 embargo area close to event centre and accommodation:



PreO Day 1 – Zalahaláp - Wednesday, August 27

Location: Zalahaláp (HUN) - 46.92237, 17.45787

Distance from EC: 17 km, 19 min

Map: Haláp-hegy

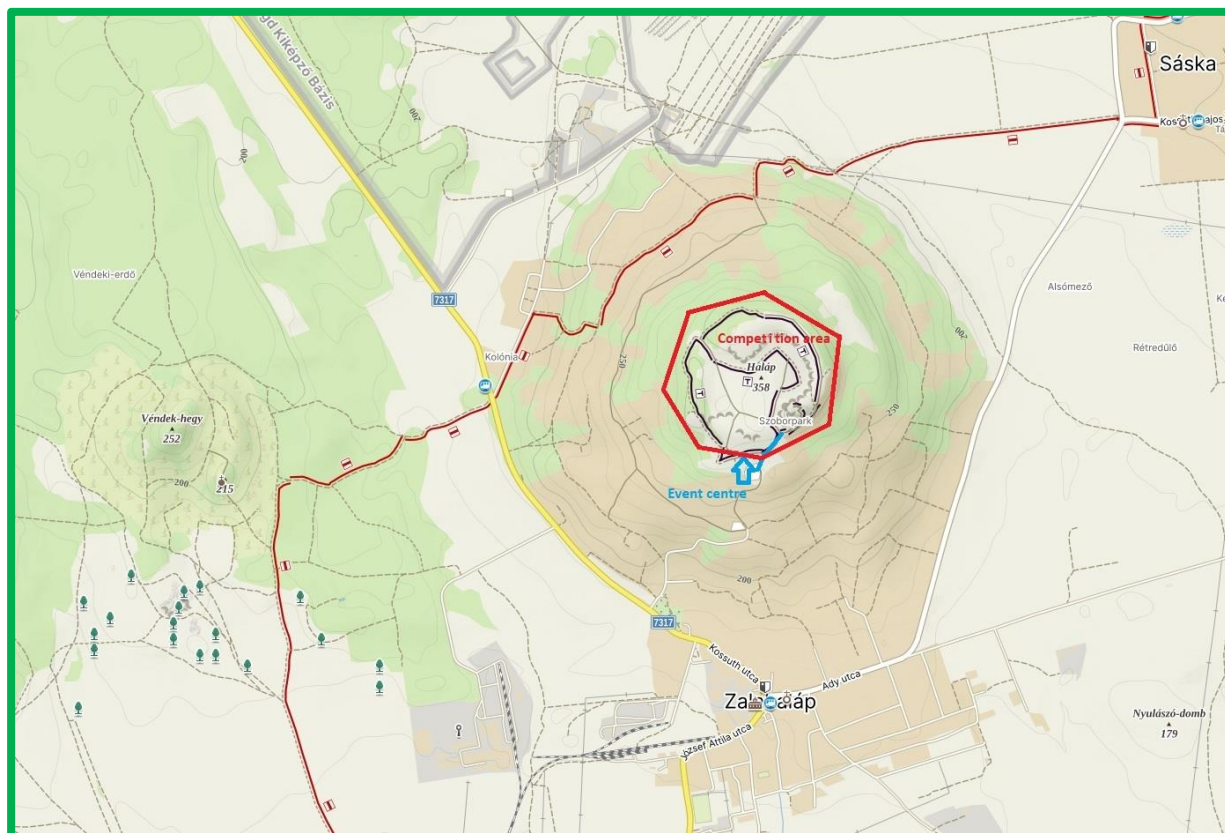
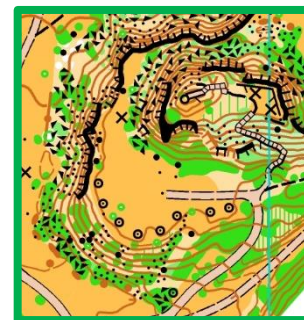
Terrain: Abandoned basalt mine, there was intensive mining in the area between 1912 and 1980, so the top of the mountain was completely washed away. This area is characterized by remaining rocks, ledges, and barren ravines.

Elevation: 250 - 360m above sea level

Last FootO competition: Never used for orienteering.

Last TrailO competition: Never used for TrailO.

Parking: 46.92245, 17.45776



Time table:

Start time: first start at 10:00

PreO quarantine closing: 12:00 (125m/18m from parking)

PreO – Public competition: 15:00

Course controls: 36 (13+9+14)

Course length: 490 m (130+120+240)

Climbing: 0 m

The distance which is not part of the course: 1 950m (120+230+380+770+200+250)

The climbing which is not part of the course: 48 m (18+20+8+0+2+0)

Time limit: 123 min (O), 140 min (P)

Timed controls: 2x3 (after the course)

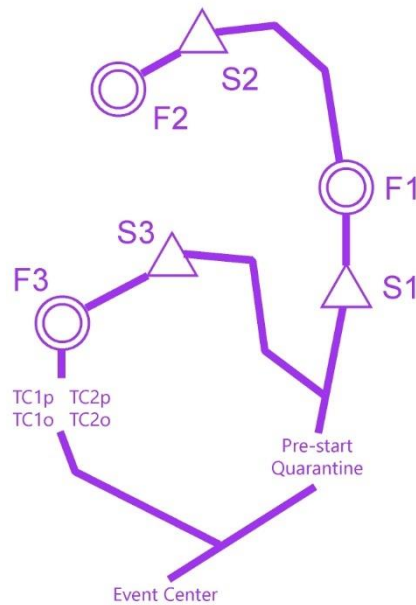
Accessibility: asphalt, dirt road, poor quality concrete

WC: in the arena, at the quarantine, between Part 2 and Part 3

Water: in the arena, at the quarantine, between Part1 and Part 2; Part 2 and Part 3, TC1 Stop

Distances:

Parking – Event Arena	0m
Event Arena – Quarantine	120 m / 18 m
Quarantine/PreO 1 start – Start 1	230 m / 20 m
PreO 1	1840 m / 10 m
TCs - Event Arena	250 m / -22m



Access to the parking area (last 900 m) is via a very poor quality, steep and narrow mostly dirt road. Local oncoming traffic is possible. Careful driving and extra time will be required.

From the finish, competitors will walk back to the event centre, accompanied by a marshal. Follow the fair play rules, do not talk, do not disturb other competitors. There can be temporary quarantine for first very quick competitors.

Quarantine: Quarantine closes at 12:00. The path to the quarantine is short but steep. (125 m / 18 m) There is a less steep, but significant difference in elevation between the quarantine/pre-start and the start. (230 m / 20 m) Wheelchair users **require assistance**. Although we provide pushers for this section, please help your companions.

Pre-start 10 minutes before the start time. For competitors starting before 12:00, the pre-start is also at the quarantine exit.

PreO Day 2 – Sümeg - Thursday, August 28

Location: Sümeg (HUN) - 46.98473, 17.28132

Distance from EC: 0 km, 0 min

Map: Sümegi-várhegy

Terrain: Open, semi-open and overgrown areas that bear traces of former mining activity.

Elevation: 200 - 350m above sea level

Last FootO competition: in year 2003.

Last TrailO competition: Never used for TrailO.



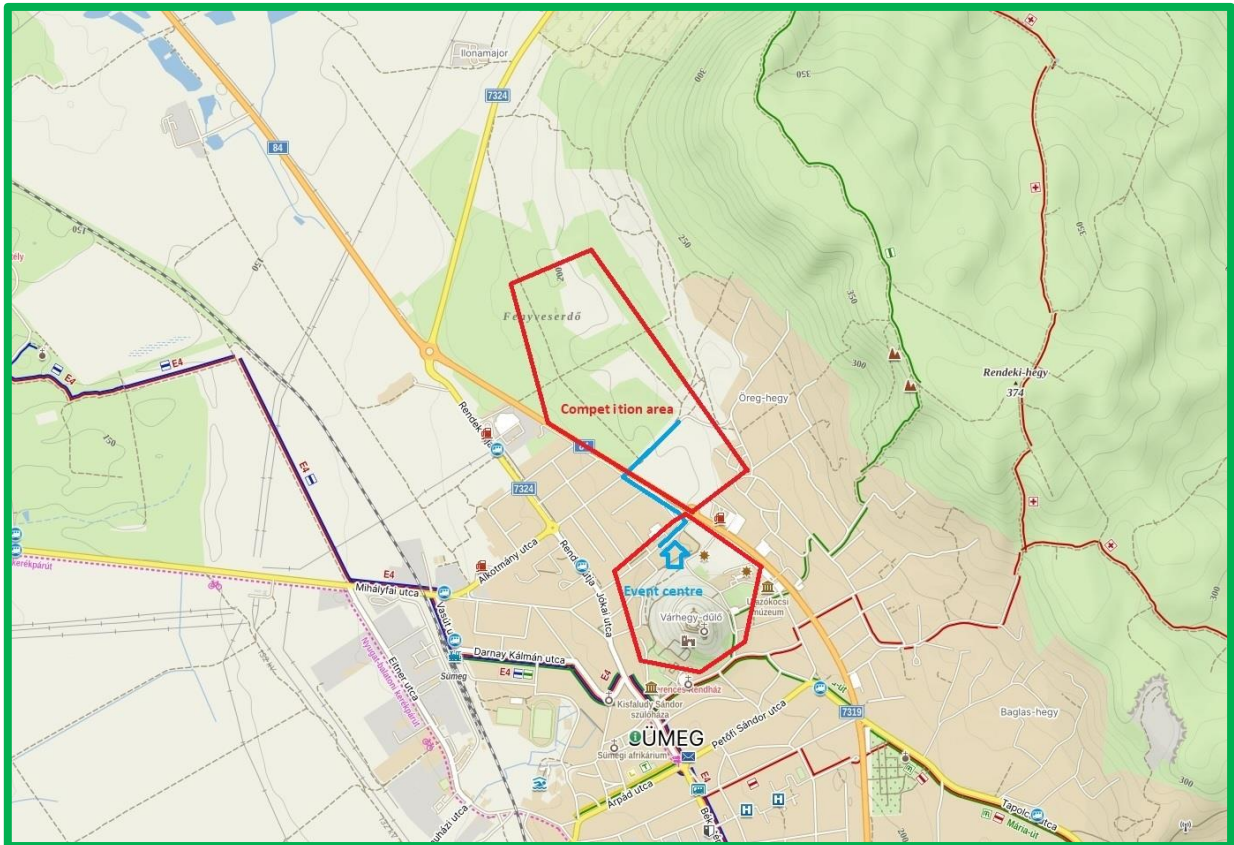
Parking lot 1 entry: 46.98713, 17.27919 (Crossing Alkotmány and Haraszti utca)

P1 is not recommended for wheel-chair users and persons having difficulties in walking.

Parking lot 2 entry: 46.98713, 17.27919 (Crossing Alkotmány and Haraszti utca)

The footpath between Parking lot 2 and Hotel Kapitány runs through an embargoed area. Its use is only permitted 20 minutes before and 20 minutes after the opening ceremony, and between 06:00 and 09:00 on the Day 2!

Parking lot 3 entry: 46.98510, 17.28121 (Hotel Parking for guests)



Time table:

PreO quarantine closing: 9:00

Start time: first start at 10:00

PreO – Public competition: 15:00 (Sümeg)

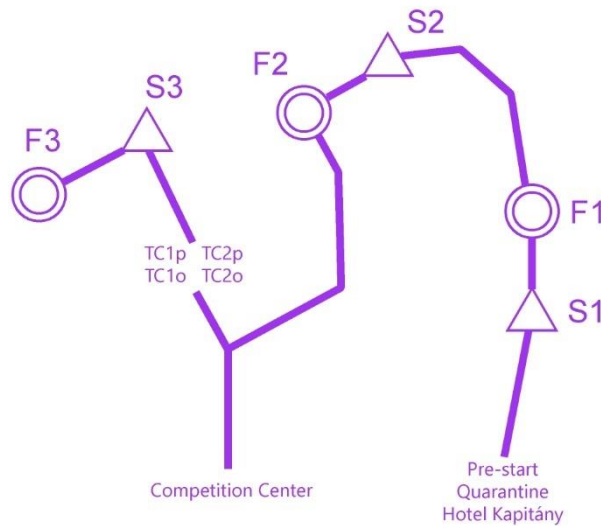
PreO – Prize giving ceremony: 18:30 (Sümeg)

Banquet: 20:00 (Sümeg)

Quarantine: Event centre - Hotel Kapitany Wellness - 46.98473, 17.28132
Course controls: 35 (9+9+17)
Course length: 590 m (230+110+250)
Climbing: 0 m
The distance which is not part of the course: 1 800m (110+495+885+65+285)
The climbing which is not part of the course: 28 m (6+4+10+4+4)
Time limit: 123 min (O), 140 min (P)
Timed controls: 2x3 (both before Start of part 3)
Accessibility: asphalt, dirt road, poor quality concrete
WC: in the arena, between Part 2 and Part3
Water: in the arena , between Part 1 and Part 2; between Part 2 and Part 3, at the Finish 3.

Distances:

Parking – Event Arena	100 - 700m
Event Arena – Quarantine	450 m (wheelchair 700 m)
Quarantine – PreO 2 start	110 m / 6 m
PreO 2	2.035 m / 18 m
PreO 2 finish - Event Arena	285 m / 4 m

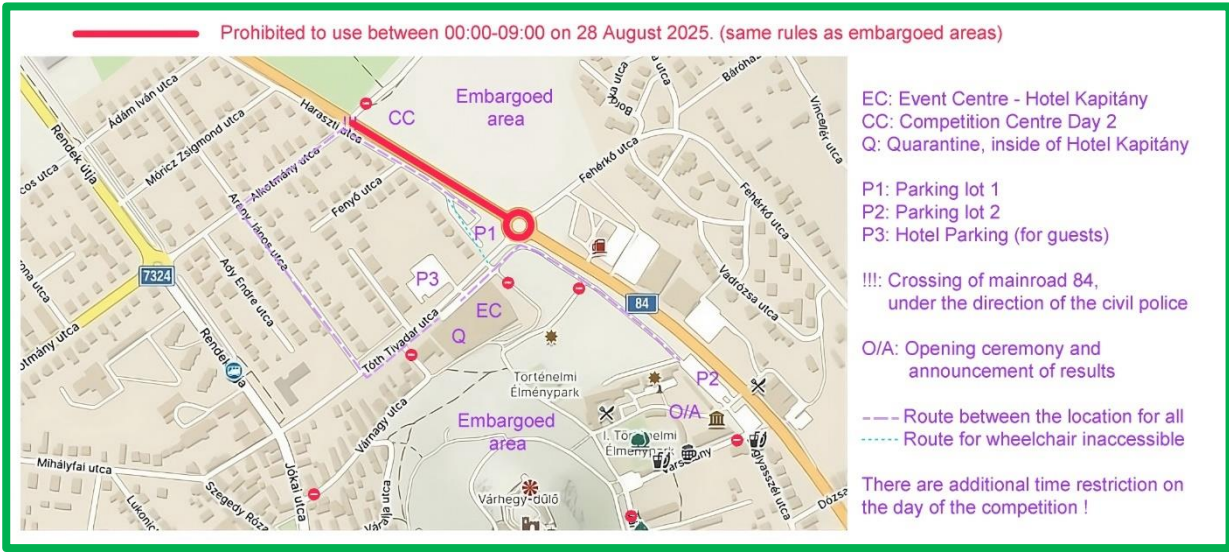


In PreO 2 enlarged maps at scale 1:2 000 for parts 1 and 2 without tasks will be handed out, together with the competition map at original scale 1:3 000. This in order to increase readability for the most complex parts of terrain.

Comments:

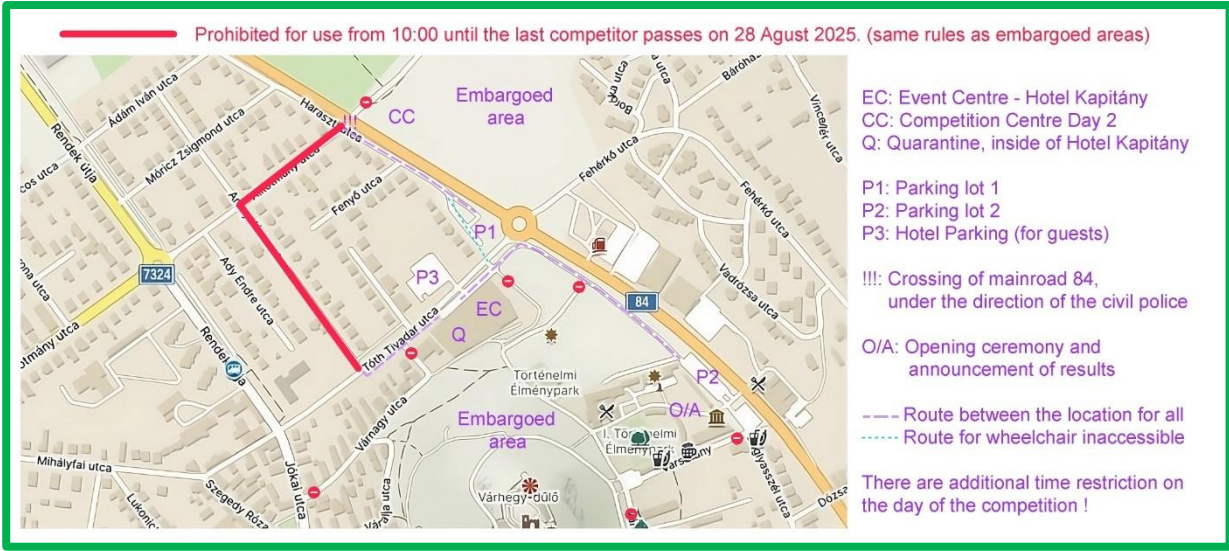
Time restriction:

On 28. August 2025 0:00-9:00 (to the closing of Quarantine) is it prohibited to use the marked section of Highway 84.



On 28. August 2025 from 10:00 until the last competitor passes are prohibited areas (except the competitor on the course)

- Arany János utca (between Alkotmány utca and Tóth Tivadar utca)
- Alkotmány utca (between Arany János utca and Haraszti utca)



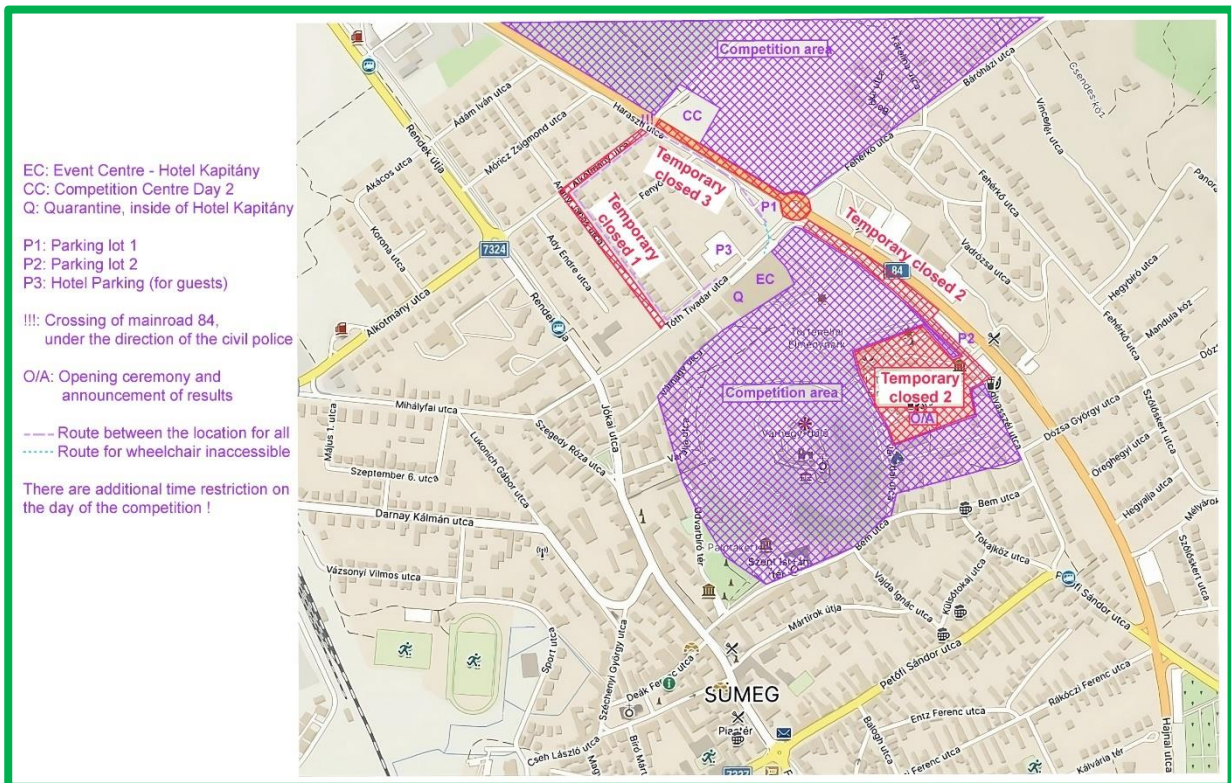
The footpath between Parking lot 2 and Hotel Kapitány runs through an embargoed area. It is prohibited to use this area until the completion of PreO2. Except use is only permitted 20 minutes before and 20 minutes after the opening ceremony, and between 06:00 and 09:00 on the Day 2!



Violation of the embargoed area rules may lead to disqualification of the entire team.

Quarantine: The quarantine will be in a cool place in the basement of Hotel Kapitány. Personal equipment not required for the competition can be left there. There are toilets directly inside the quarantine area, and toilets for wheelchair users are in another part of the building, where they can go only with a marshal.

Overall scheme of PreO 2 embargo area close to event centre and accommodation:



Model – Častá - Červený Kameň - Friday, August 29

[Model for TempO and Relay \(TempO part\)](#)

Location: Častá - Červený Kameň (SVK) - 48.39529, 17.33163

Distance from EC: 46 km, 41 min

Map: Hrad Červený Kameň

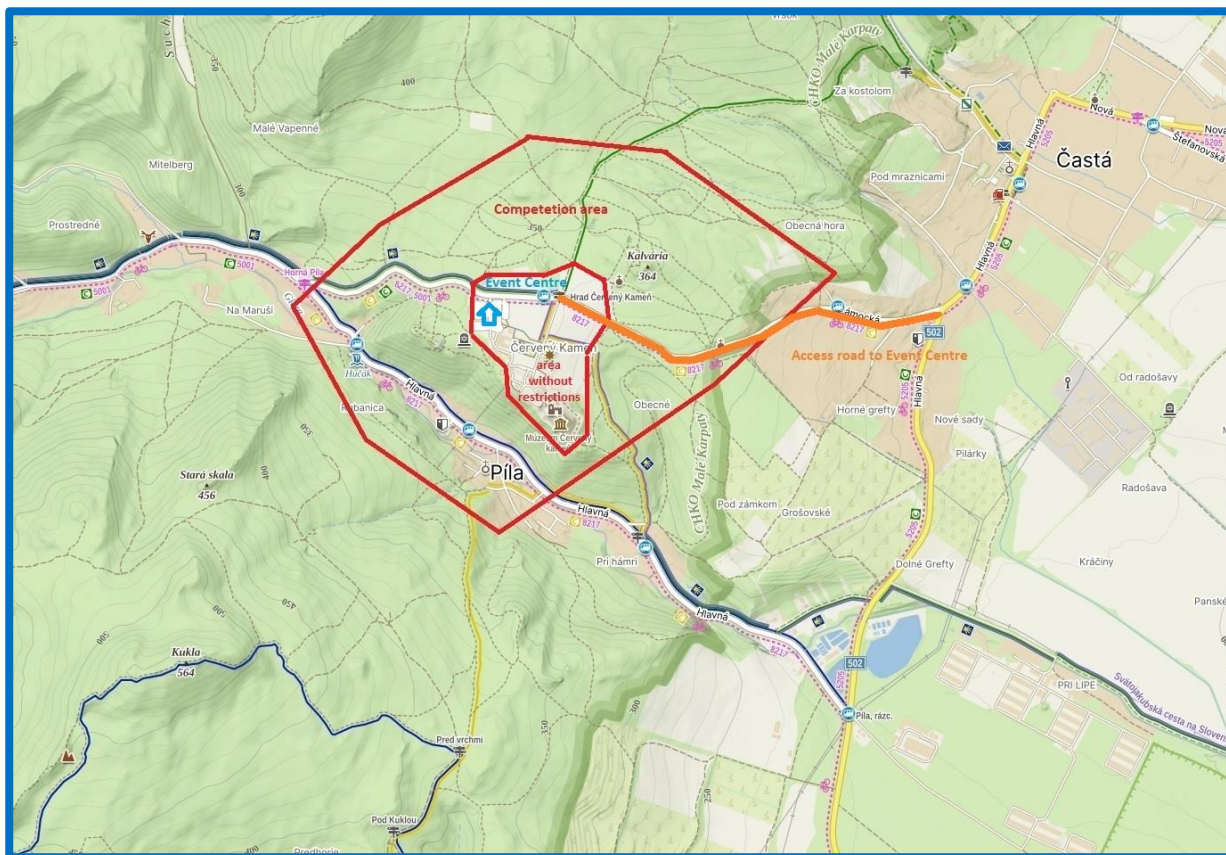
Terrain: Deciduous forests with areas of small stones and contour details, castle park.

Elevation: 300 - 400m above sea level

Last FootO competition: in year 2017.

Last TrailO competition: in year 2017.

Parking: 48.39529, 17.33163



Time table:

TOC Classification for P category: from 9:00 to 16:00 (event centre)

Start time: first start at 10:00

Relay competition entry deadline: 18:00 (IOF Eventor)

Team official's meeting: 19:00 (Bratislava)

Course length: 200 m

Climbing: 0 m

The distance which is not part of the course: 1 500m (700+800)

The climbing which is not part of the course: 20 m (0+20)

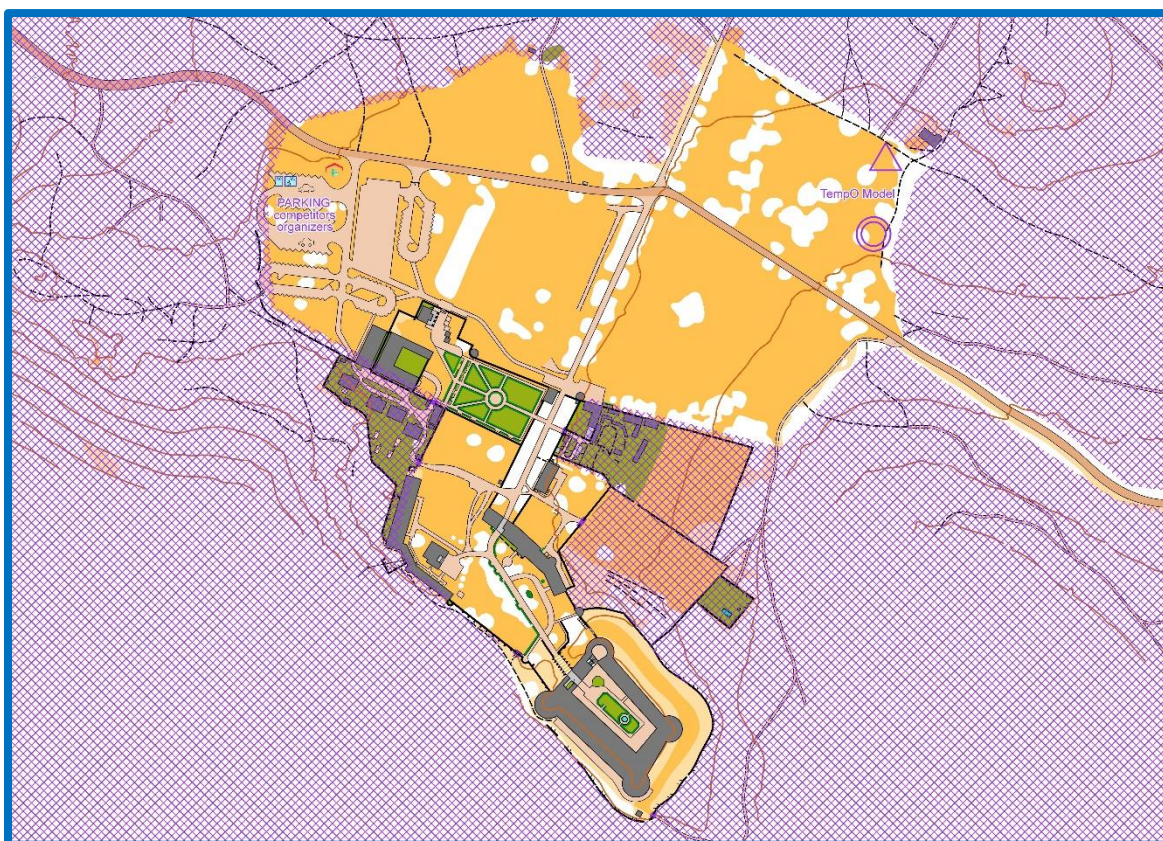
Time limit: 150 second per stations

Timed controls: 3x5

Accessibility: forest path and meadow

WC: in the arena

Water: in the arena



Distances:

Parking – Event Arena	0m
Event Arena – Model start	700m
Model	200m
Model finish - Event Arena	800m.

The access to event centre is only permitted over road from village Častá displayed by orange line in the picture of competition area on page 25! Violation of the embargoed area rules may lead to disqualification of the entire team.

The model event is open to every accredited athlete, accompanying person and team official. Wearing the number bib is mandatory.

The model event will be considered as a race event due to the large number of participants and they will be split into two groups. The training mode will be possible only when it will not disturb other competitors and it will be possible to keep the time plan and fair play principles. The solution maps will be given to teams at the event office, and you can take them to the course. Carrying muted cell phones and taking photos is allowed at the model event.

Start time slots			
10:00	BRA, CRO, CZE, FIN	13:00	LAT, LTU, POL
11:00	HKG, SWE, UKR	14:00	ESP, ISR, KOR, POR, USA
12:00	AUT, GBR, GER, JPN, NED, NOR	15:00	HUN, ITA, SVK

Relay – Dolný Lopašov - Saturday, August 30

Location: Dolný Lopašov (SVK) - 48.58984, 17.63065

Distance from EC: 74 km, 58 min

Map: Dolný Lopašov

Terrain: Semi open area of old quarry and valley with steep slope on one side.

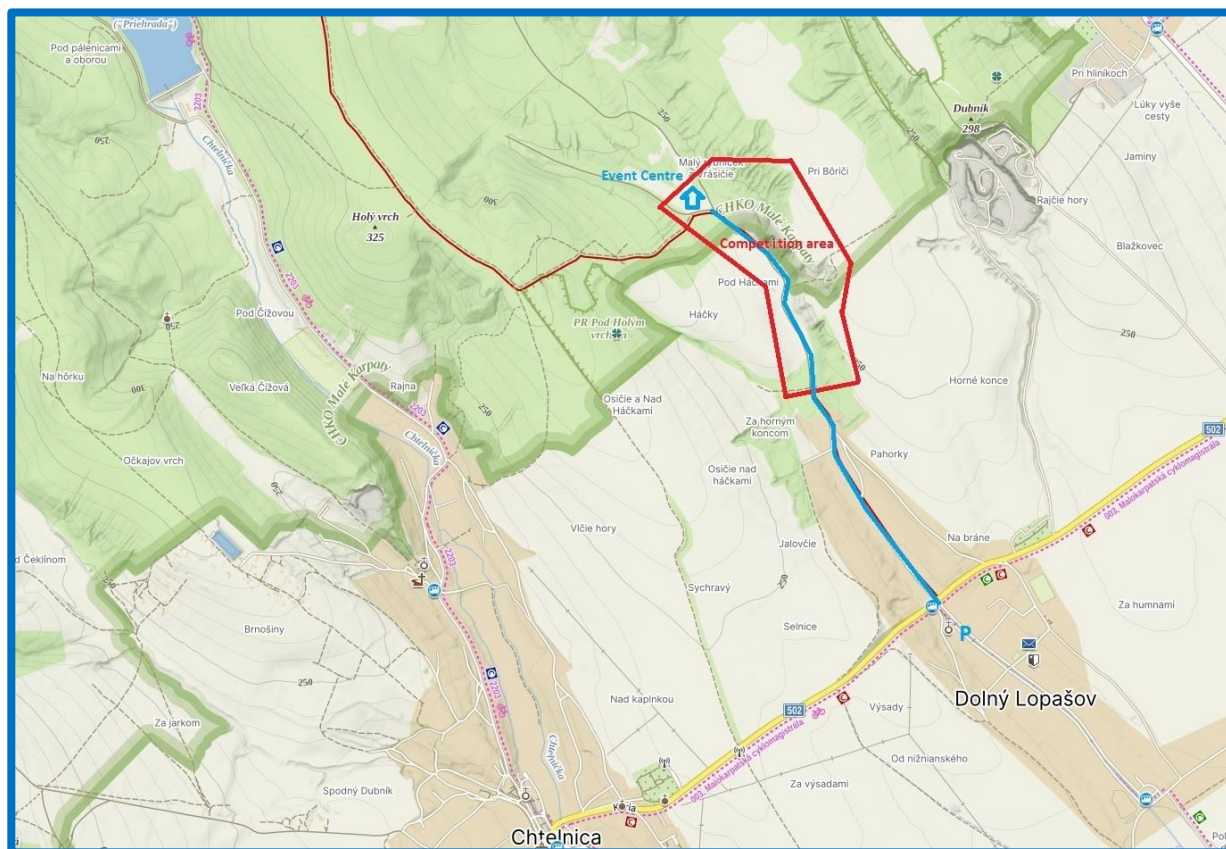
Elevation: 200 - 250m above sea level

Last FootO competition: Never used for orienteering.

Last TrailO competition: Never used for TrailO.

Parking: 48.57654, 17.64274

Parking for wheelchairs cars: 48.58984, 17.63065



Time table:

Recommended deadline time on Parking: 8:30 (Dolný Lopašov)

Relay quarantine closing: 9:00 (meadow close to village Dolný Lopašov)

Start time: P category start at 10:00, Open category start at 10:15

TempO competition entry deadline: 12:00 (IOF Eventor)

Relay course open for public: 14:00

Relay – Prize giving ceremony: 15:00 (Dolný Lopašov)

Team official's meeting: 19:00 (Bratislava)

Quarantine: meadow close to village Dolný Lopašov - 48.58984, 17.63065

Course controls: 3x15 (OPEN), 3x11 (P)

Course length: 30 m

Climbing: 0 m

The distance which is not part of the course: 1 200m (200+250+150+600)

The climbing which is not part of the course: 10 m (0+0+0+10)

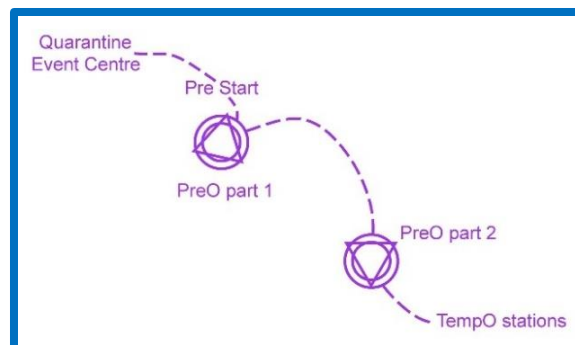
Time limit: 138 min (O), 138 min (P)

Timed controls: two different TempO stations for each leg (after PreO part) + the last Relay leg has one additional public TempO station.

Accessibility: gravel road and meadow (PreO part)

WC: in the arena, quarantine and after second section

Water: in the arena, quarantine and after second section



Distances:

<u>Parking (48.57654, 17.64274)</u> – Event Arena	1 800m
<u>Parking P competitors (48.58984, 17.63065)</u> – Event Arena	
(parking only for wheelchairs cars without stopping in competition area)	0m
Event Arena – Relay start	200m
Relay	30m
The distance between sections and TempO stations	1200m.

The parking outside dedicated area is prohibited. The competitors and accompanying persons can go from parking to quarantine only by official transport! The exception is only for wheelchairs cars (with permission from organizers and with any types of persons) without stopping in competition area. Violation of the embargoed area rules may lead to disqualification of the entire team.

The competitors on first leg of the Relay have to wait in quarantine to 9:45 (P) and 10:00 (OPEN). They will be called to prestart area before real start. The start of first legs will be mass start, but before entering first section in competition area they have to punch start ToePunch start box (then time starts). Competitors complete first section by punching ToePunch finish box and go to second section. The competitors on other legs will be informed by marshal about going to prestart from quarantine area. After competitors complete the PreO part (by punching the finish unit at the end of Part2) there will be virtual takeover to next team mate. The competitors have to read out set of seven ToePunch chips after PreO section 2 before the TempO stations.

There are 2 * 3 TempO stations. The competitors will be called on TempO stations according to their colour on number bibs (red, green and blue).

There will be a waiting area after TempO stations where competitors have to wait on marshal who will take them back to event centre. Follow the fair play rules, do not talk, do not disturb other competitors.

Competitors from leg 3 will go to quarantine after completing their courses. They are then sent to the third TempO station, in reversed order according to the current standing, as a final.

In Relay enlarged maps at scale 1:2 000 for parts 1 and 2 with tasks will be handed out, together with the competition map at original scale 1:3 000. This in order to increase readability for the most complex parts of terrain.

TempO – Častá - Červený Kameň - Sunday, August 31

Location: Častá - Červený Kameň (SVK) - 48.39495, 17.33333

Distance from EC: 46km, 41 min

Map: Hrad Červený Kameň

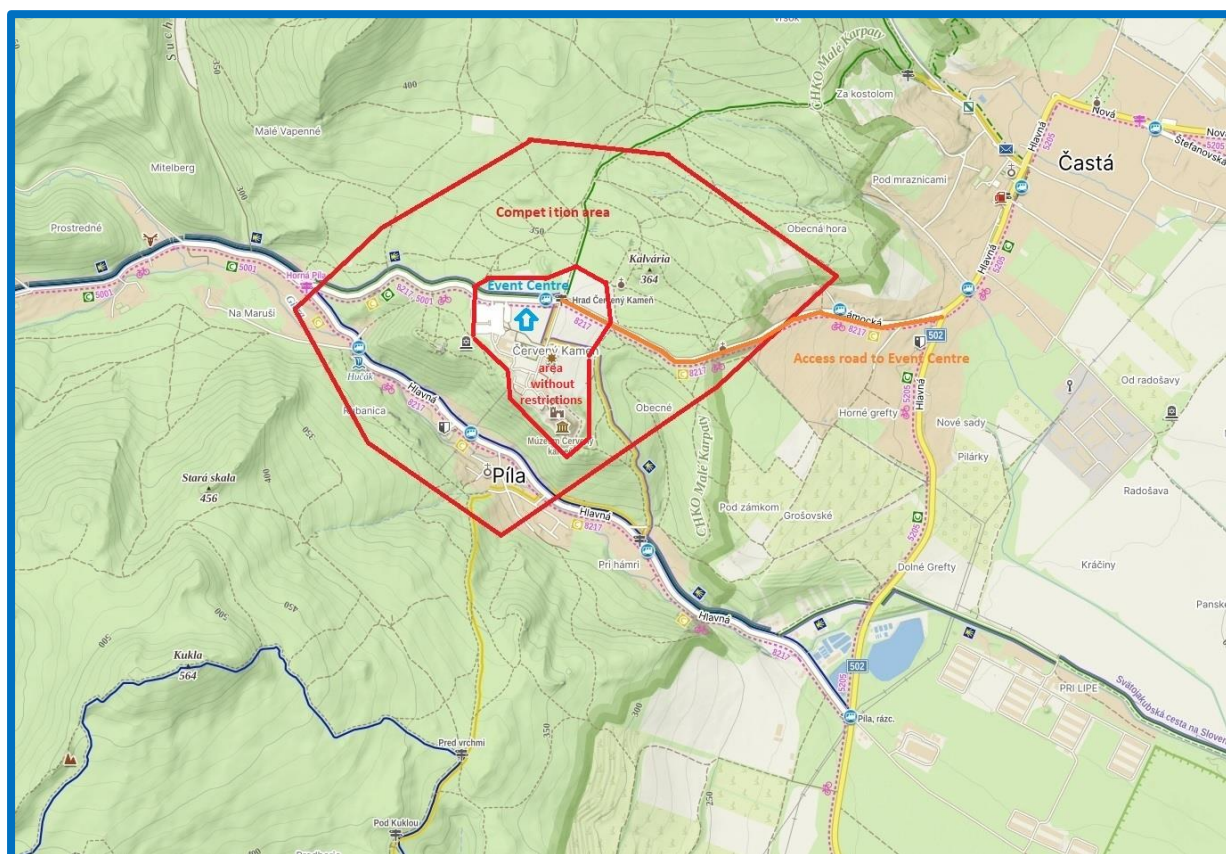
Terrain: Deciduous forests with areas of small stones and contour details, castle park.

Elevation: 300 - 400m above sea level

Last FootO competition: in year 2017.

Last TrailO competition: in year 2017.

Parking: 48.39495, 17.33333



Time table:

TempO Qualification quarantine closing: 9:15 (meadow close to castle Červený Kameň - Častá)

TempO Qualification Start time: first start at 9:30

TempO – Public competition: 13:00

TempO Final quarantine closing: 15:15 (meadow close to castle Červený Kameň - Častá)

TempO Final Start time: first start at 15:30

TempO – Prize giving ceremony and Closing Ceremony: 18:00 (meadow close to castle Červený Kameň - Častá)

TempO Qualification

Quarantine: meadow close to castle Červený Kameň - 48.39495, 17.33333 (closing at 9:15)

Course length: 2 400 m (Heat B) and 2 600 m (Heat A)

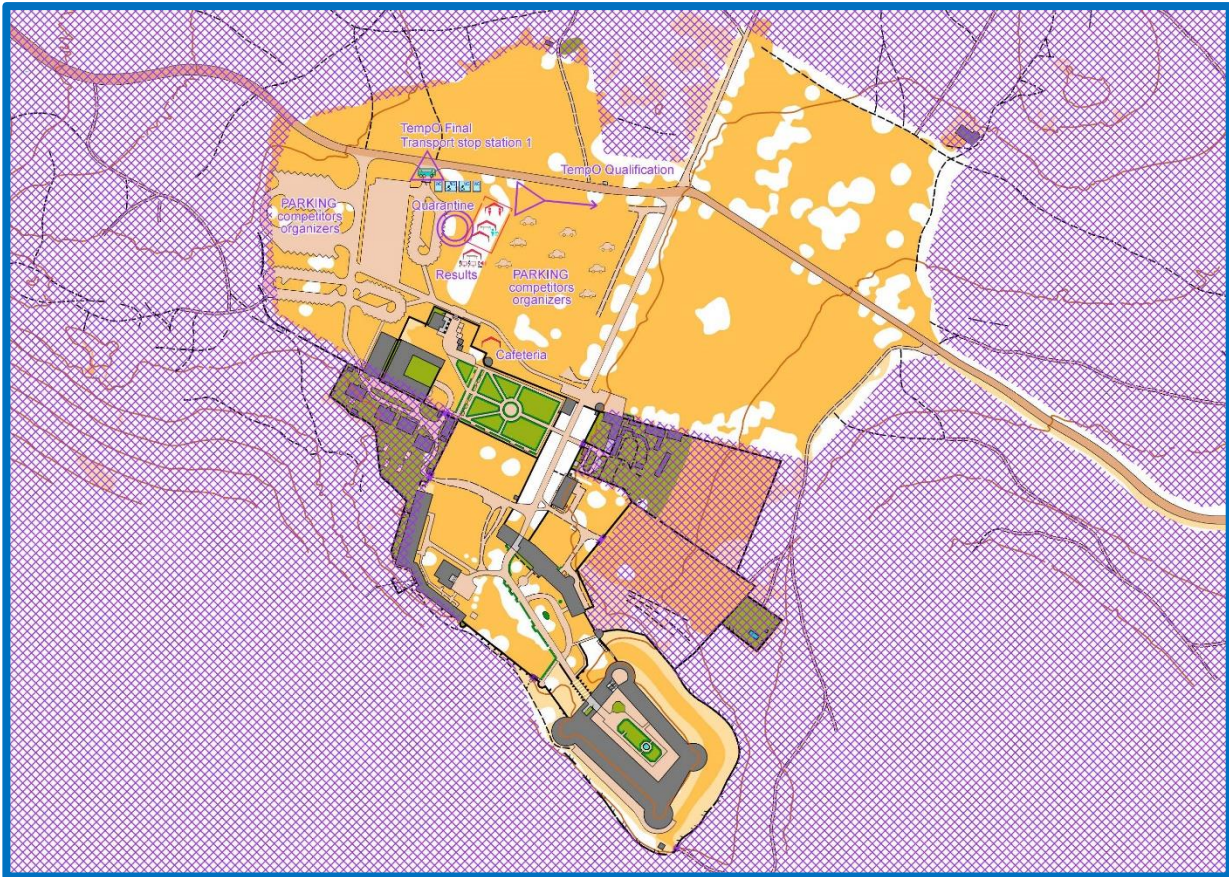
Climbing: 50 m

Timed controls: 6x5

Accessibility: forest path

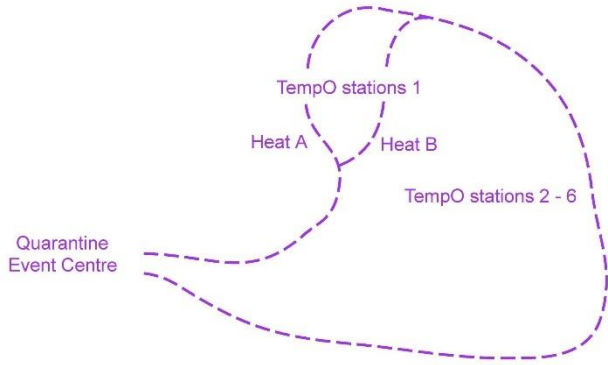
WC: in the arena and in quarantine

Water: in the arena and in quarantine



Distances:

Parking – Event Arena	0m
Event Arena – TempO Q start	0m
TempO Q	2 400 – 2 600m

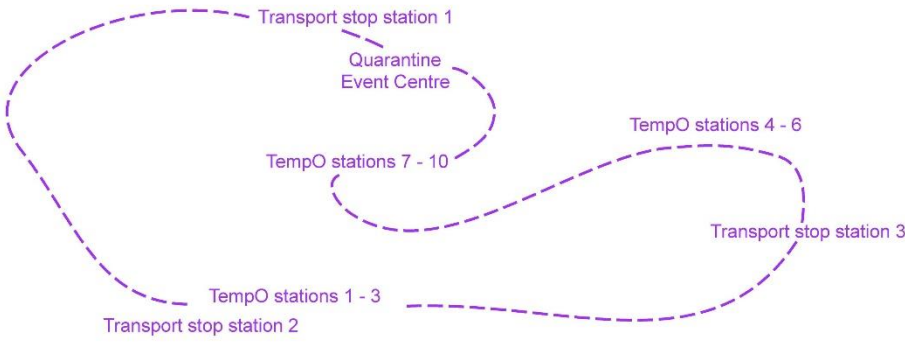


TempO Final

Quarantine: meadow close to castle Červený Kameň - 48.39495, 17.33333 (closing at 15:15)
Course length: 2 500 m
Climbing: 60 m
Timed controls: 10x5, last three stations will be public
Accessibility: asphalt road, paved road, forest path and meadow
WC: in the arena and in quarantine
Water: in the arena and in quarantine

Distances:

Parking – Event Arena	0m
Event Arena – TempO F start	0m
TempO F	2 500m + 3 600m by car



The access to event centre is only permitted over road from village Častá displayed by orange line in the picture of competition area on page 29! Violation of the embargoed area rules may lead to disqualification of the entire team.

The TempO courses will be marked coloured ribbons or / and signpost on intersections. Competitors will obtain scheme of course on Qualification and Finale starts for clarification.

There are different routes to first TempO stations in TempO Qualification for Heat A and Heat B. The rest of the route for Qualification is the same.

In the TempO competition only the 36 best placed competitors from the qualification may participate in the final. There are two qualification heats the top 18 from each heat qualify for the TempO Final. The starting order of the TempO final will be reversed of the placings in the qualification race heats; the best competitors will start last.

The competitors will be transported to TempO Final course by car from Transport stop close to Quarantine area. After completion of stations 1-3 the competitors will be again transported to next part of course by car. The remaining part of course will be by walking.

Mapping

The maps are generalized, not everything that is in the terrain is depicted in the maps. The used terrains are very difficult to map, as it is not easy to express the space between and the size of the objects. Sometimes objects are enlarged or slightly shifted for better understanding or readability, which fully corresponds to the use of the ISSprOM map standard. It specially means that the use of sighting lines is not the best way to find the solution. However, we tried to check most of them. You need to take into consideration the fact that due to a lot of objects in small areas, it was sometimes necessary to maintain the correct relative positions of objects, so it is not always possible to keep the exact position of objects. The technique to identify two or more reference points on the map that line up with a feature on the map is not a recommended method for finding the right answer and will not be accepted in any complaints. Map reading and terrain understanding is the best way for solving the tasks.

The borders of extra decision point areas, start triangle, finish and one-way symbols shown on the map have only informative purposes and their position may not correspond with position in terrain. The border and positions of red tapes in terrain are crucial for determining the competition out-of-bounds areas.

We are using last version of [IOF Control Descriptions 2024](#) published on [IOF pages](#).

All maps are mapped according to ISSprOM 2019-2 - International Specification for Sprint Orienteering Maps. However, for better understanding, you can find a few examples of mapping below.











Special symbols:

- X – distinctive rootstock (419 Prominent vegetation feature)
- O – distinctive pillar (530 Prominent man-made feature – ring)
- X - picnic table with chairs, distinctive information board (531 Prominent man-made feature – x)

Nonstandard usage of symbols

__ small rockfaces mapped as step (501.1 Step or edge of paved area)

Zero tolerance

The distance between the correct position and the closest flag is always 4 or more meters.

In specific circumstances, greater Zero tolerance is used as it is specified in the IOF Technical Guidelines for TrailO. The information about greater Zero tolerance will be showed in control description by digit which represent actual Zero tolerance for this task.

Doubled flags will be used for tasks with bigger Zero tolerance for Relay competitions (PreO and TempO part).



Accreditation, Number bibs

Some zones in the arenas are only accessible for accredited people. Accredited persons prove their accreditation with a start number bibs or by accreditation cards. The number bibs and accreditation cards for teams will be provided in the registration envelopes (together with safety pins).

The number bibs shall be clearly visible from the front and worn on the chest or leg.

Each accredited person will have a single start number for the entire event. It will be used for all individual races, including the model and public races. For the relay race, another set of number bibs will be used. Non-accredited public race competitors will have no number bibs.

Punching, Time keeping and Result system

In the whole event, the ToePunch system will be used. Competitors should learn essential facts about the system from the User manual (<https://toe.yq.cz/ToePunch-Competitors.pdf>) on the server toe.yq.cz. ToePunch chipsets for each team will be provided in the envelope on registration.

The punching order is free in individual parts of all courses.

It is the competitor's responsibility to ensure that the electronic punch is in the e-card with respect to the ToePunch system, checking that a confirmation signal has been received. If after a repeated attempt, it appears that the punch has not been transferred to the e-card, the competitor must use the control descriptions on the map for backup. The first column is used for marking an answer of A, second column is used for marking an answer of B etc. A Zero answer uses the last column, column H. It is the responsibility of each competitor to immediately inform the marshal after end of each section if backup punching was used. Marshal will register and mark the competitor map in this case.

The ANT system (ant.yq.cz) will be used at timed and TempO stations. The procedure will be as usual; the only exception is that we will not provide any special stands for pointing instead of speaking.

The [start and result lists](#) will be available online on the server top.yq.cz.

Anti-Doping

Doping is strictly forbidden and the organizers of the WTOC are dedicated to supporting the anti-doping authorities in their work. Doping tests are always carried out in accordance with the procedures described in the WADA International Standard for Testing.

The IOF Anti-Doping Code and rules and the World Anti-Doping Code 2021 apply as of January 1st, 2021.

Athletes who are selected for the doping tests must bring an official identification (with photo) to the doping test area. The athlete should also bring along their therapeutic use exemption (TUE) if applicable. In general, it is advisable that the athletes bring along their ID to all the competitions and events.

Complaints, Protests, Jury

Complaints may only be made by team officials or competitors. Any Complaint must be made in writing to the organiser as soon as possible and the Complaint must be handed over to organizers in competition event centre.

The time limit for Complaints is 15 minutes after the full results have been published. Complaints received after this time limit will only be considered if there are valid exceptional circumstances which must be explained in the Complaint.

A Protest may be made against the organiser's decision about a Complaint. A Protest may only be made by the team official or competitor who made the Complaint.

Any Protest must be made in writing to the organiser no later than 15 minutes after the organiser has informed the complainant of the decision about the Complaint. Protests received after this time limit may be considered at the discretion of the jury if there are valid exceptional circumstances which must be explained in the Protest.

The Protest must be handed over to organizers in competition event centre.

A Protest fee of 50 EUR (or the equivalent in local currency) must be paid when making a Protest. The fee will be returned if the Protest is accepted by the jury, otherwise the fee must be sent to the IOF.

The jury appointed by the IOF is:

- Hannu Niemi (FIN)
- Koji Chino (JPN)
- Jorge Baltazar (POR)



Summary of received entries

Federation	Team Official	Open Athlete	Physically challenged Athlete	Accompanying Person	Total
Austria		1			1
Brazil		1			1
Croatia		5			5
Czechia		6	4	1	11
Finland	1	8	4	2	15
Germany		7			7
Great Britain	1	5	1	2	9
Hong Kong China	1	6			7
Hungary		5	2	2	9
Israel	1	1			2
Italy	1	8	4	2	15
Japan	2	7			9
Korea	1	3	1		5
Latvia		7	4	2	13
Lithuania		4			4
Netherlands		1			1
Norway		6	1		7
Poland		8	6	6	20
Portugal	1	4			5
Slovakia		7			7
Spain		6	4		10
Sweden		8	4		12
Ukraine	1	8	6	2	17
United States	3	7			10
Sum	13	129	41	19	202

Partners

Towns:



Municipalities:



Organisers



Típo TKE
Pozsonyi út 52
1133 Budapest
Hungary



ŠK Farmaceut Bratislava
Orechová 3034/10
900 31 Stupava
Slovakia

Sponsors

Global sponsors



Local sponsors



HM SPORTÉRT FELELŐS
ÁLLAMTITKÁRSÁG



Nemzeti
Sportfejlesztési és
Módszertani Intézet



Notes

.....

.....

.....

.....

.....

.....

.....

.....

.....

.....

.....

.....

.....

.....

.....

.....

.....

.....

.....

.....

.....

.....

.....





WTOC 2025
SLOVAKIA HUNGARY



WTOC 2025
SLOVAKIA HUNGARY