



Research Group
Cartography

International Cartographic Association
Association Cartographique Internationale



The relevance of **Cartography** as a scientific discipline

Georg Gartner
Budapest 2016



Cartography as a scientific discipline

building and organizing knowledge

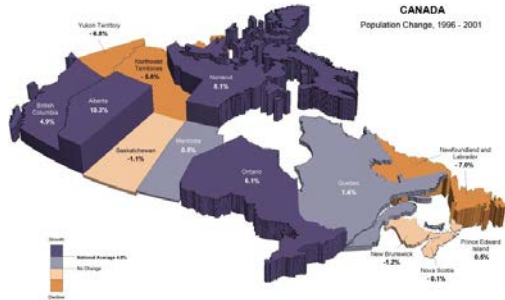
Cartography as a scientific discipline

building and organizing knowledge
by means of testable explanations and
predictions

often with an applied focus on engineering
aspects



Augmented reality



thematic mapping



Visual Analytics

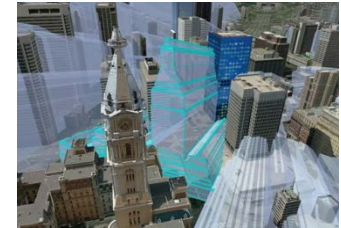


LBS



map and art

Modern Cartography as a mixture of formal, social and applied sciences



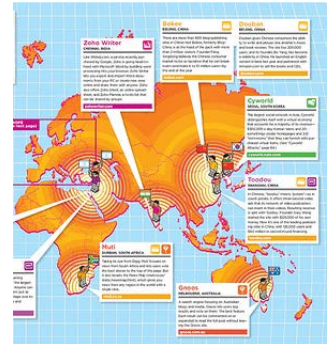
3D, data analysis



map perception



data matching



maps in web 2.0



ICCSU

International Council for Science



Drivers of Cartography as a science

everything happens somewhere



Drivers of Cartography as a science

Academic Institutions

Industrial R&D

Organisations

Persons

International Cartographic Association
Association Cartographique Internationale



International Cartographic Association

International Cartographic Association
Association Cartographique Internationale



International Cartographic Association

mission

the **world authoritative body** for cartography
and geoinformation science

International Cartographic Association
Association Cartographique Internationale



International Cartographic Association mission

world authority means
national and affiliate members
represented at UN bodies and other
international organisations



International Cartographic Association

Aims

- Understanding and solve world-wide problems using cartography
- Informing about environmental, economical, social and spatial information through mapping
- Promote professional methods, techniques and solutions
- Global forum on cartography

International Cartographic Association
Association Cartographique Internationale



International Cartographic Association Instruments: Map Exhibitions



International Cartographic Association
Association Cartographique Internationale



International Cartographic Association Instruments: Children Map Competition

10th International Exhibition, Paris, 2011
20 Years Barbara Petchenik Competition, Dresden, 2013

International Cartographic Association

Commission on Cartography and Children

Children Map the World

<http://icaci.org/> <http://lazarus.elte.hu/ccc/ccc.htm>

1 - Victoria Lan, Age 9, Canada; 2 - Trisha C. Reyes, Age 8, Philippines; 3 - Polina Kosovskaya, Age 15, Russia; 4 - Nikola Zlatanov, Age 7, Bulgaria; 5 - Nicholas William, Age 15, Indonesia; 6 - Suhita Nath, Age 11, India; 7 - Evelin Demeter, Age 12, Romania; 8 - M.Yafie Abdillah, Age 8, Indonesia; 9 - Ami Kanno, Age 13, Japan; 10 - Ellie Parboe, Age 8, United Kingdom; 11 - Dorsa Moradi, Age 8, Iran; 12 - Tamas Csikos, Age 14, Hungary; 13 - Marta Londzin, Age 13, Poland; 14 - Brooke Angaran, Age 9, USA; 15 - Marcia Grieva, Age 12, Russia

International Cartographic Association
Association Cartographique Internationale



International Cartographic Association

Instruments: Research Agenda

Geographic Information

Metadata and SDI

Geospatial Analysis and Modelling

Usability

Geovisualisation

Map Production

Cartographic Theory

History of Cartography and GI Science

Education

Society

International Cartographic Association
Association Cartographique Internationale



International Cartographic Association

Commissions

Commission on Art and Cartography **Commission on Atlases** **Commission on Cartography and Children** **Commission on Cartography in Early Warning and Crisis Management** **Commission on Cognitive Visualization** **Commission on Data Quality** **Commission on Digital Technologies in Cartographic Heritage** **Commission on Education and Training** **Commission on Generalisation and Multiple Representation** **Commission on Geoinformation Infrastructures and Standards** **Commission on Geospatial Analysis and Modeling** **Commission on Geovisualization** **Commission on GI for Sustainability** **Commission on the History of Cartography** **Commission on Map Design** **Commission on Map Production and Geo-Business** **Commission on Map Projections** **Commission on Mapping from Remote Sensor Imagery** **Commission on Maps and Graphics for Blind and Partially Sighted People** **Commission on Maps and Society** **Commission on Maps and the Internet** **Commission on Mountain Cartography** **Commission on Neocartography** **Commission on Open Source Geospatial Technologies** **Commission on Planetary Cartography** **Commission on Theoretical Cartography** **Commission on Ubiquitous Mapping** **Commission on Use and User Issues**

International Cartographic Association
Association Cartographique Internationale



International Cartographic Association

Outreach and Capacity Building

Hands-on Workshops

most recent at Cuba, Iran, New Zealand, South Africa, Tunisia, Germany
Hands-on Workshop on OSGeo WebMapping for UN at Vienna

Seminars

most recent: Cartographic Generalisation Istanbul, Heritage Gent..

Symposia most recent: Service-oriented Mapping, Vienna

International Cartographic Association
Association Cartographique Internationale



International Cartographic Association

UN endorsed International Year of the Map

2015



International Cartographic Association
Association Cartographique Internationale



International Cartographic Association

Instruments: Conferences

International Cartographic Conference
July 2017 Washington D.C.

International Cartographic Association
Association Cartographique Internationale



International Cartographic Association

www.icaci.org

The screenshot shows the ICA website homepage. At the top, there is the ICA/ACI logo and the text "International Cartographic Association Association Cartographique Internationale". Below this is a navigation menu with items: News, Calendar, Publications, The Association, Members, Commissions, Research Agenda, ICC Conferences, and a question mark. The main banner features a panoramic 3D map of Sunny Beach, Bulgaria, with a callout box that says "ICA Map of the Month 03/2012". Below the banner, there are two main content areas. The first is titled "CfP: LBS 2012 in Munich" and contains text about the 9th International Symposium on Location-Based Services in Munich, Germany, from October 16 to 18, 2012. It includes details about the call for papers, publication opportunities, and contact information. The second area is titled "CET Workshop Opportunities" and describes GIS/cartography workshops organized by the CET on behalf of the ICA. On the right side, there are two vertical sections: "Recent Posts" and "Upcoming Events". The "Recent Posts" section lists "CfP: LBS 2012 in Munich", "CET Workshop Opportunities", "Education and Training Modules", "March's Map of the Month is a panoramic tourist map of Sunny Beach, Bulgaria", and "Mountain Cartography Workshop in New Zealand in September". The "Upcoming Events" section lists "Mar 26-Mar 30 GeoTunis 2012", "Apr 17-Apr 19 Geo Siberia 2012", "Apr 19-Apr 20 7th ICA Workshop on Digital Approaches to Cartographic Heritage", "Apr 23-Apr 27 Geospatial World Forum", and "Apr 24 Open Source GIS & WebMapping". At the bottom right, there is a small graphic with the year "2013".

ICA
International Cartographic Association
Association Cartographique Internationale

News Calendar Publications The Association Members Commissions Research Agenda ICC Conferences ?

ICA Map of the Month
03/2012

Map of the Month 3/2012: Panoramic tourist map of resort Sunny Beach, Bulgaria

CfP: LBS 2012 in Munich

We would like to inform you about the 9th International Symposium on Location-Based Services, which will take place in Munich, Germany, from October 16 to 18, 2012.

Given the fact, that a number of activities and industries in the domain of GNSS, LBS and geoinformation management are situated in and around Munich, this promises to be an excellent venue.

The call for paper is currently open, please consider the deadline of April 15, 2012.

Publication in either the *Journal on LBS* and/or a book within the series *Lecture Notes on Geoinformation and Cartography* is anticipated.

Detailed information can be found at <http://www.lbs2012.tum.de>.

Category: Commission News, Maps and the Internet, Open Source Geospatial Technologies
Tag: cfp, Germany, LBS, symposium

5 March 2012 Guest No comments

CET Workshop Opportunities

GIS/Cartography workshops have been successfully organised and conducted in Iran (2009), Indonesia (2010) and Viet Nam (2010), by the CET, on behalf of the International Cartographic Association. An outline of the workshop conditions and format can be found at <http://azarus.elte.hu/cet/workshop/overview.pdf>

Recent Posts

- CfP: LBS 2012 in Munich
- CET Workshop Opportunities
- Education and Training Modules
- March's Map of the Month is a panoramic tourist map of Sunny Beach, Bulgaria
- Mountain Cartography Workshop in New Zealand in September

Upcoming Events

- Mar 26-Mar 30 GeoTunis 2012
- Apr 17-Apr 19 Geo Siberia 2012
- Apr 19-Apr 20 7th ICA Workshop on Digital Approaches to Cartographic Heritage
- Apr 23-Apr 27 Geospatial World Forum
- Apr 24 Open Source GIS & WebMapping

2013

Drivers of Cartography as a science

